

Access Power.



**Some Fleets need Chargers, Others need Solutions
Access your Fleet's REAL Potential Today**



+ High Frequency Based Multi-Charger

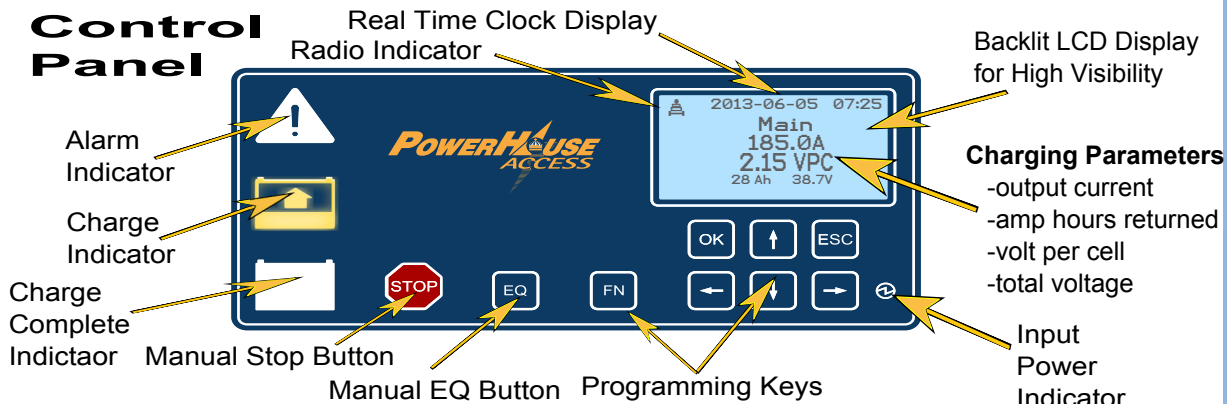
- Microcomputer smart charger
- Charges all common battery types
- High efficiency, 92%
- High power factor, 0.95
- Low weight and small volume
- Wireless Radio Standard on all PowerHouse Access Chargers
- Display and control panel permit simple programming
- Advanced precision control for best battery life
- 1800 cycles of archived charging data
- 480VAC, 3PH

ECOTEC
powerful solutions in battery charging



The Power in PowerHouse Access

Control Panel



Charger Model Matrix

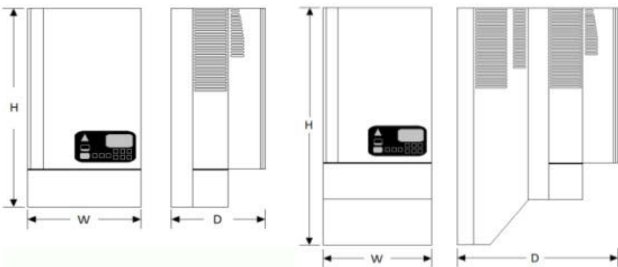
Cells	Standard Charging							Opportunity Charging						
	Amp Hour Capacity		Model Number	DC Output Amps	AC Input Amps 480VAC, 3PH	Case Size	Weight	Amp Hour Capacity		Model Number	DC Output Amps	AC Input Amps 480VAC, 3PH	Case Size	Weight
	AH	Range						AH	Range					
12	510	170-595	24-510-31	83	4	31	46	510	365-555	24-510-310C	128	5	31	49
	680	555-790	24-680-31	111	5	31	46	680	485-735	24-680-310C	170	7	31	49
	765	625-895	24-765-31	125	5	31	49	765	545-830	24-765-330C	191	8	33	55
	935	760-1085	24-935-31	152	6	31	49	880	625-955	24-880-330C	220	9	33	55
	1045	850-1215	24-1045-31	170	7	31	49	935	670-1015	24-935-320C	234	10	32	87
	1190	970-1385	24-1190-33	194	8	33	55	1045	745-1130	24-1045-320C	260	11	32	90
18	375	170-425	36-375-31	61	4	31	43	375	270-410	36-375-310C	94	6	31	43
	510	415-595	36-510-31	83	5	31	46	510	365-555	36-510-310C	128	8	31	46
	765	625-895	36-765-31	125	8	31	49	680	485-735	36-680-310C	170	10	33	49
	935	760-1085	36-935-31	152	9	31	49	765	545-830	36-765-330C	191	12	33	55
	1045	850-1215	36-1045-31	170	10	31	49	880	625-955	36-880-330C	220	13	33	55
	1190	970-1385	36-1190-33	194	12	33	57	935	655-1015	36-935-320C	234	14	32	87
24	1275	1040-1485	36-1275-33	208	13	33	57	1045	740-1130	36-1045-320C	260	16	32	90
	1350	1100-1575	36-1350-33	220	13	33	57	1190	850-1295	36-1190-320C	298	18	32	90
	1360	1110-1585	48-1360-32	222	18	32	87	1360	1110-1585	48-1360-32	222	18	32	87
	1600	1300-1860	48-1600-32	260	21	32	90	1600	1300-1860	48-1600-32	260	21	32	90
	255	170-300	80-255-31	42	6	31	43	255	180-280	80-255-310C	64	9	31	43
	500	400-570	80-500-31	80	11	31	46	320	225-350	80-320-310C	80	11	31	46
80	615	500-715	80-615-33	100	13	33	57	400	285-435	80-400-330C	100	13	33	55
	680	555-790	80-680-32	111	15	32	84	510	365-555	80-510-320C	128	17	32	86
	800	650-925	80-800-32	130	17	32	86	635	455-700	80-635-320C	160	21	32	86
	980	800-1140	80-980-32	160	21	32	86							

Charger Cabinet Dimensions

Enclosure	H	W	D
31	21"	10"	9"
32	25.75"	10"	19.25"
33	22.5"	10.5"	9.75"

Cabinet 31 & 33

Cabinet 32



POWERHOUSE
CHARGERS

©2014 PowerHouse Chargers
Printed in the U.S.A

1445 Majestic Drive
P.O. Box 990
Fremont, OH 43420 USA
419-334-7181
Fax: 419-334-7124

www.powerhousechargers.com

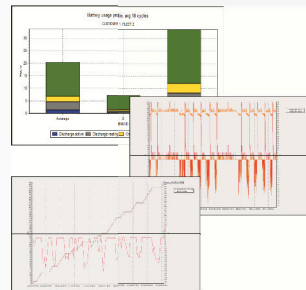
Charger Options

Battery Event Logging & Reporting

Battery Monitoring Unit (BMU)



Individual Battery and Fleet Reporting using Service Tool Software



Best Battery Choice

- + Built-In Feature to FIFO battery choice
- + Wireless : No Additional Hardware or Software Required
- + External I/O Control and Display Available
- + Create Your Own Group ID
- + Charger display will indicate best choice by displaying Green for each Group ID

Rack & Floor Stands

